



9 King Georges Lodge Cardwells Keep,
Guide Price £435,000

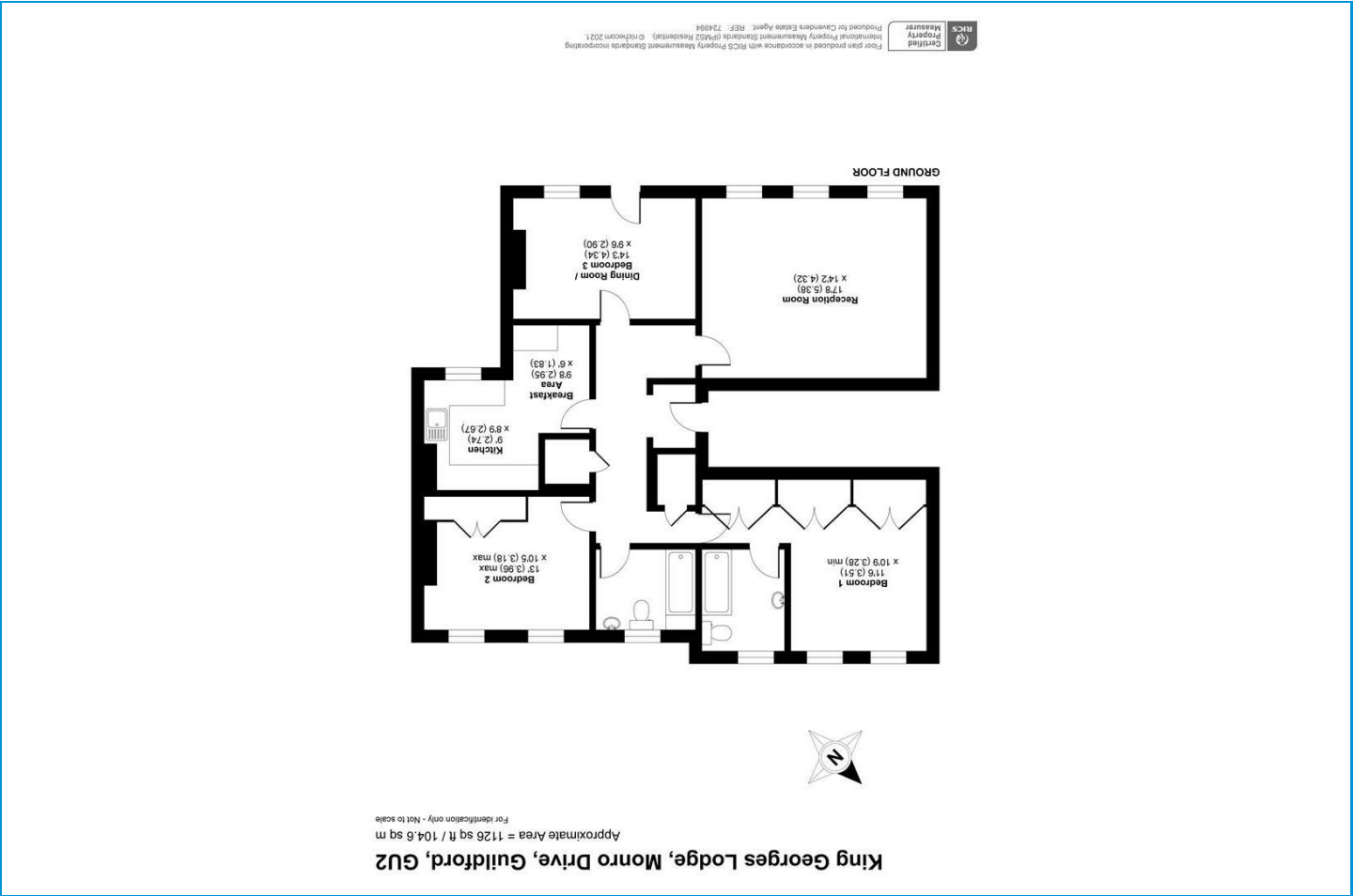
3

2

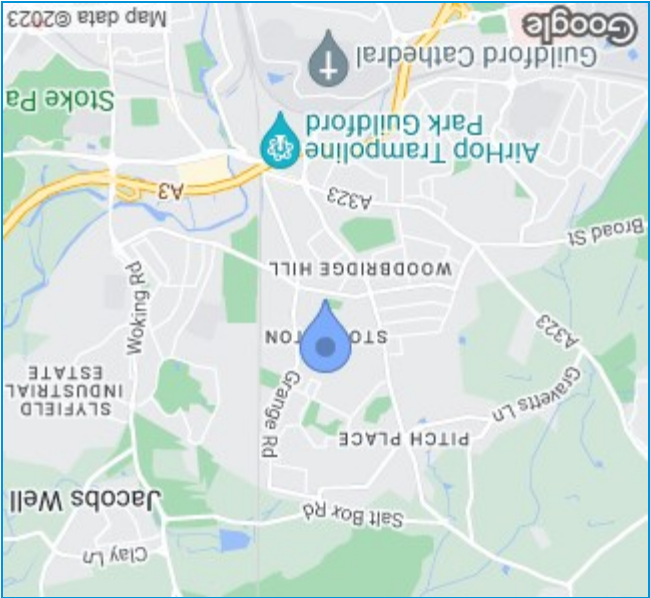
2

D

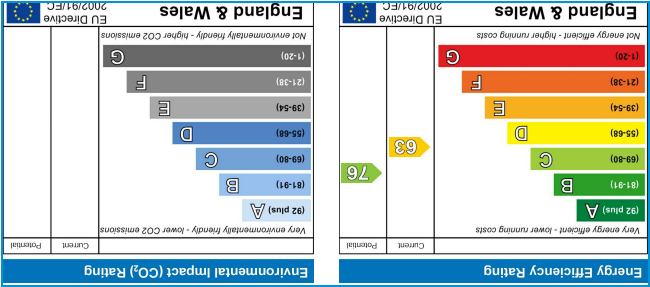
Floor Plans



Area Map



Energy Performance Rating



Fees

Your text here

****NO CHAIN**** Spacious two/ three bedroom, two bathroom apartment located in a highly iconic and historic development within easy reach of Guildford town centre and A3 access. Parking and communal gardens.



Description

Located in the highly iconic and historic Cardwells Keep development, this stunning apartment offers exceptionally spacious accommodation throughout. Boasting two bedrooms and two bathrooms, the apartment oozes character features throughout. Having originally been an army barracks, the building was converted to residential apartments almost 30 years ago. The apartment is positioned overlooking the well kept green which features mature trees and a large green open space. It has its own entrance and the accommodation is conveniently arranged so all rooms can be accessed from the entrance hall. The apartment features a large lounge, a spacious master bedroom with built in wardrobes and en suite bathroom, a further double bedroom, a third bedroom/ dining with doors to the communal garden, kitchen/ breakfast room and a family bathroom. There are large windows and high ceilings throughout the whole apartment giving a light and airy feeling. Further features include allocated parking and ample built in storage. Cardwells Keep is conveniently positioned within easy reach of Guildford town centre and offers easy A3 access. There are several local shops close by and bus routes to both the town centre and the hospital and University area of Guildford.

Situation



Council Tax:
Available: